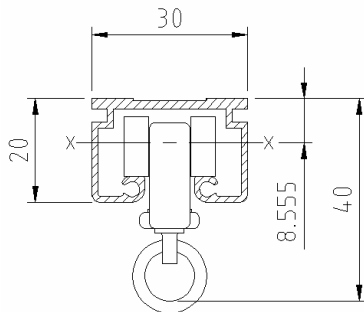


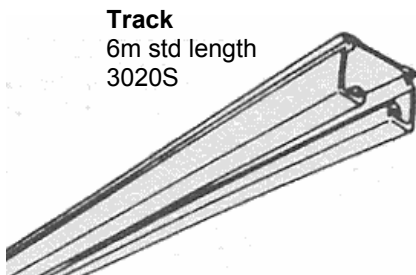
**30Z light duty stage track** technical data sheet

30Z-data rev 0

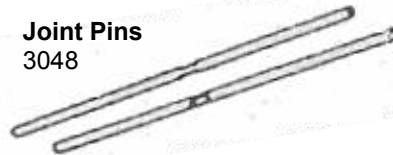


<b>track section</b>	<b>3020S</b>
area	139 mm <sup>2</sup>
lxx	7730 mm <sup>4</sup>
lyy	16448 mm <sup>4</sup>
rx	7.45 mm
ry	10.86 mm
material	aluminium 6060 T5
0.2% proof	110 MPa
UTS	150 MPa
mass	0.376kg/m (2.258kg/6m)
finish	silver anodised

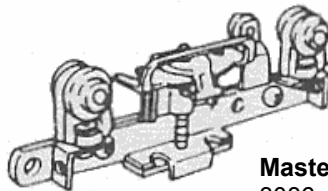
<b>runner</b>	<b>3031</b>
body material	nylon - white
wheels	nylon tyre -white
capacity	max.5kg



**Track**  
6m std length  
3020S



**Joint Pins**  
3048



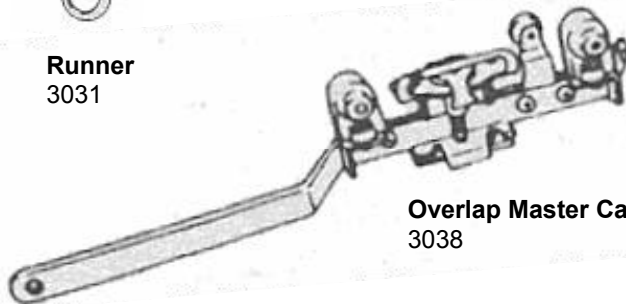
**Master Carrier**  
3036



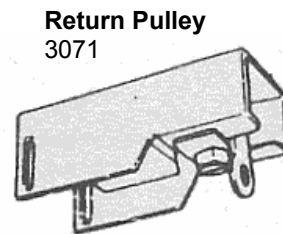
**End Cap**  
3041



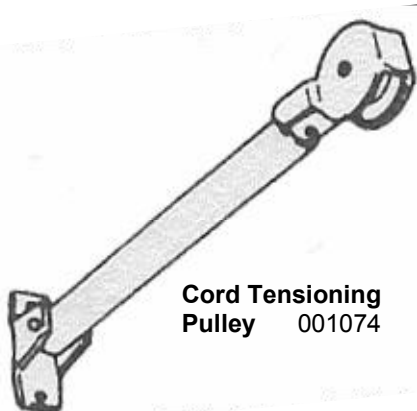
**Runner**  
3031



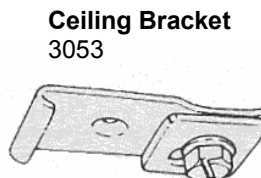
**Overlap Master Carrier**  
3038



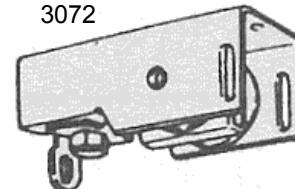
**Return Pulley**  
3071



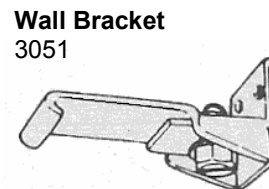
**Cord Tensioning Pulley** 001074



**Ceiling Bracket**  
3053



**Head Pulley**  
3072



**Wall Bracket**  
3051